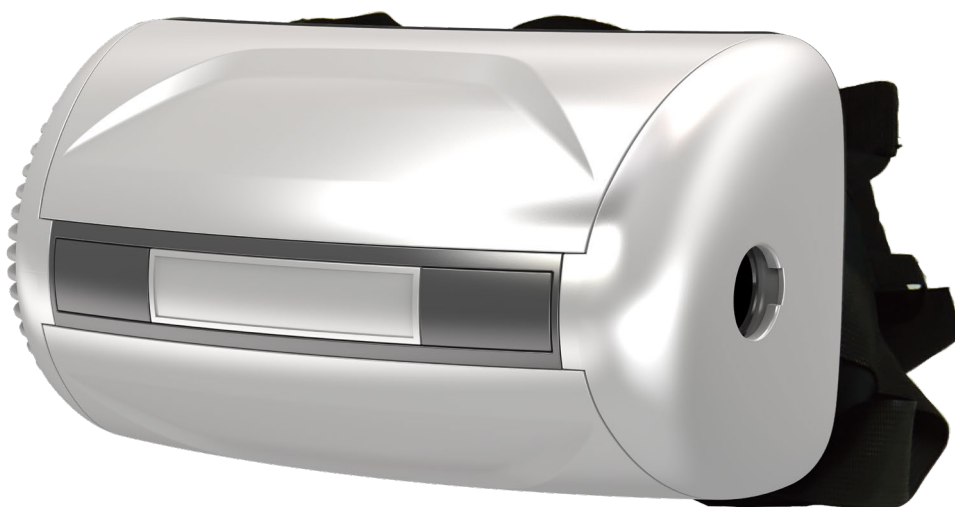




## Instruction Manual

# HIPSTAR

## HIPVAC VACUUM CLEANER



Model: HIPSTAR

- Please read this Instruction Manual carefully before operation and follow all guidelines before using this vacuum cleaner.
- Please keep this Manual for future reference.

# **IMPORTANT SAFETY INFORMATION**

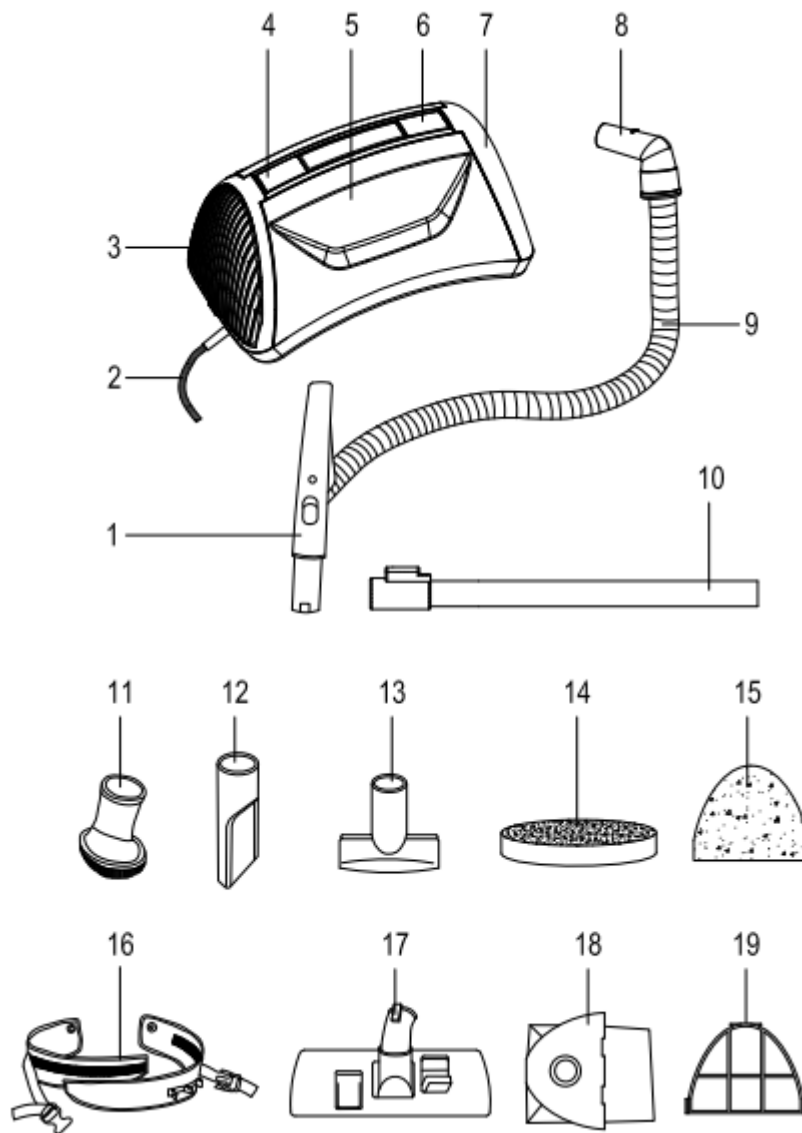
When using your Vacuum, basic safety precautions should always be observed, including the following:



**WARNING** – Read Instruction Manual before using this product. Failure to do so can result in serious injury or death. To reduce the risk of fire, electric shock, or injury.

1. Use only as described in this manual. Use only the recommended attachments and replacement parts.
2. **DO NOT** use the vacuum outdoors or on wet surfaces. **DO NOT** expose to rain or water.
3. **DO NOT** use or store vacuum in wet or moist conditions.
4. **DO NOT** try to recover any liquid with this vacuum. This vacuum is for **DRY RECOVERY** only.
5. **DO NOT USE A DAMAGED VACUUM.** If the unit is not working as it should, or if it has been damaged, left outdoors, or exposed to water, take it to an Authorised Repair Centre for inspection and repair.
6. This appliance is not intended for use by persons (including children) with reduced physical, sensory or mental capabilities, or lack of experience and knowledge, unless they have been given supervision or instruction concerning use of the appliance by a person responsible for their safety.
7. Children should be supervised to ensure that they do not play with the appliance.
8. **DO NOT** handle the on/off switch with wet hands.
9. **DO NOT** put any objects into openings. Do not use with any opening blocked, keep free of dust, lint, hair, and anything that may reduce air flow.
10. Keep hair, loose clothing, fingers, and all parts of body away from openings and moving parts.
11. Use with extra care when cleaning on stairs.
12. **DO NOT** vacuum flammable or combustible materials or anything that is burning or smoking, such as cigarettes, matches or hot ashes.
13. Sparks inside the motor can ignite flammable vapors, to reduce the risk of fire or explosion, do not use near combustible liquids, gases, or dusts, such as gasoline or other fuels, lighter fluid, cleaners, oil-based paints, or natural gas.
14. To reduce the risk of inhaling toxic vapors or dust, **DO NOT** vacuum or use near toxic or hazardous materials.
15. **DO NOT** use without a dust bag and filter in place.

# GETTING TO KNOW YOUR VACUUM CLEANER



1. Hose handle
2. Power cord
3. Exhaust grill
4. Release button for exhaust grill
5. Main body
6. Release button for air inlet cover
7. Dust bag cover
8. Hose connector
9. Flexible hose
10. Extension rod

11. Dusting brush
12. Crevice tool
13. Upholstery tool
14. Pre-motor foam filter
15. Exhaust filter
16. Waist strap
17. Combination floor tool
18. Dust bag
19. Rubber sealing

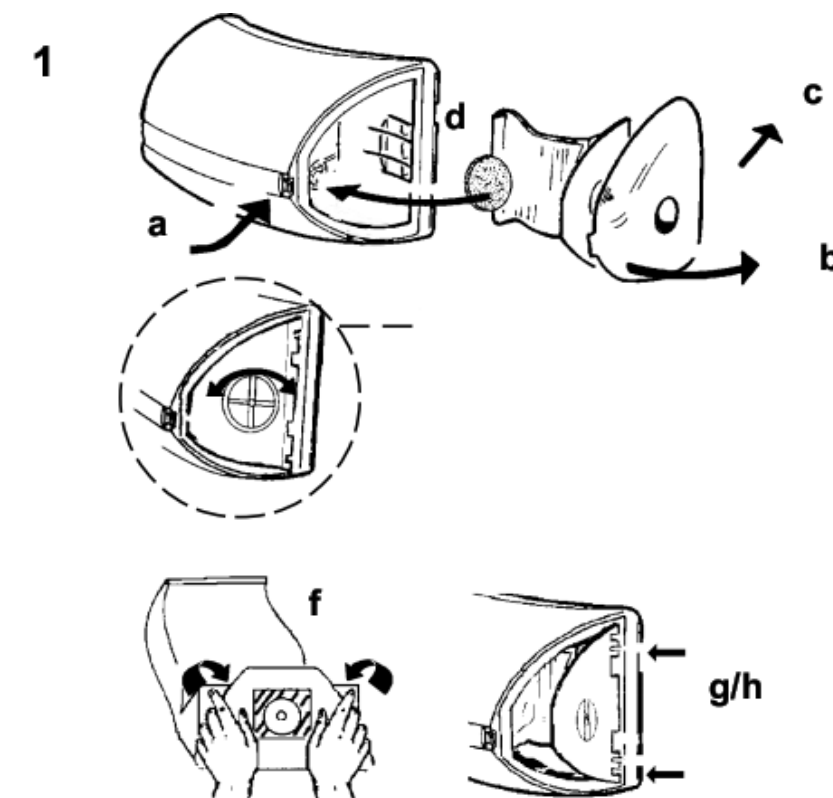
# OPERATING INSTRUCTIONS

## 1. DUST BAG INSTALLATION

- a) Open the triangular shaped dust bag cover by gently pressing one end of the locking bar to release the locking mechanism.
- b) Grasp the cover in your hand, lifting the upper corners of the cover away from the vacuum housing.
- c) Slide the bottom edge of the cover away so the hinges on the cover slip out of the housing.
- d) Inside the dust bag cavity, a round foam filter helps to protect the motor. Be sure this filter is in place prior to installation of the dust bag.
- e) Not applicable.
- f) Gently unfold the new dust bag. The upper corner of the dust bag should be slided in so they do not interfere with the cardboard plate resting securely on the housing.
- g) Ease the dust bag into the cavity, placing the cardboard plate onto the exterior lip of the cavity. Make sure that the cardboard plate is fitted behind the two small clips on the exterior lip.

**NOTE: The triangular shaped cardboard plate must be placed evenly on the exterior lips in order for the dust bag cover to be properly installed.**

- h) Replace the dust bag. First grasp the cover in your hand, and insert the lower cover hinges into the indentations. Be sure the dust bag cardboard plate is resting evenly on the lips of the cavity. Close the cover and make certain it clicks into place.



## 2. BELT

The belt locking clip is designed to hold the vacuum Securely around your waist while working.

**To connect:** Simply insert the toothed connector into the belt buckle until it snaps into place.

**To disconnect:** Gently squeeze the outer clips together, and pull connector out of belt buckle.

**To adjust the belt for individual comfort:**

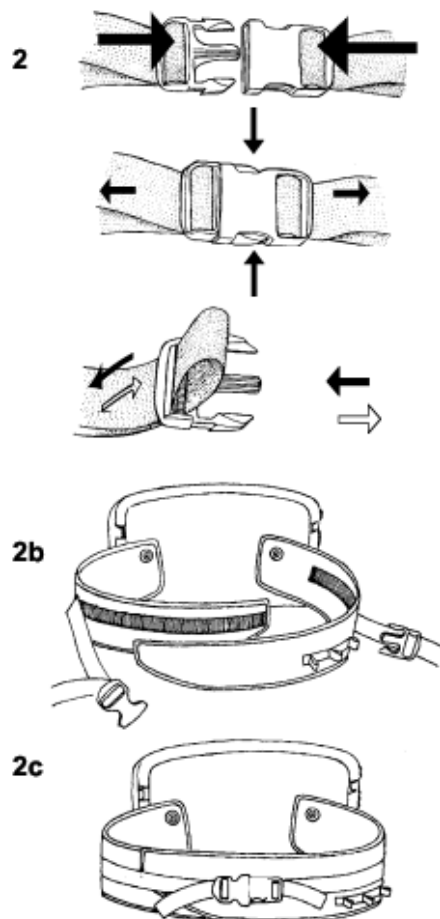
**Larger:** Hold the belt locking clip in one hand and slide the nylon belt until a loop is formed. Pull the belt locking clip to adjust the slack in nylon belt.

**Smaller:** Pull the loose end of the nylon belt until adjusted to desired size.

### SOFT BELT

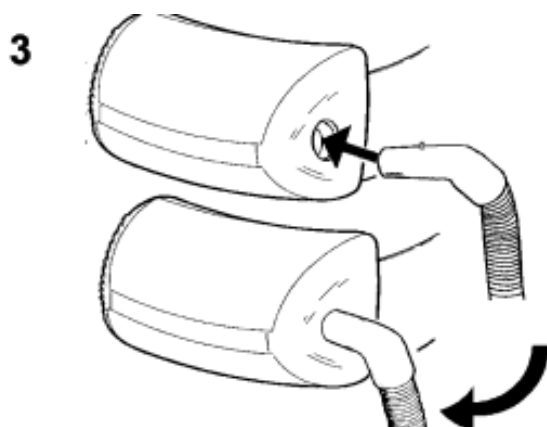
**2b)** Wrap the belt around your waist. Adjust it to the desired size by fitting the two nylon parts together.

**2c)** Then you'll insert the toothed connector into the belt buckle until it snaps into place. To disconnect the belt when work is finished, gently squeeze the outer dips together, and pull connector out of belt buckle.



## 3. HOSE CONNECTION

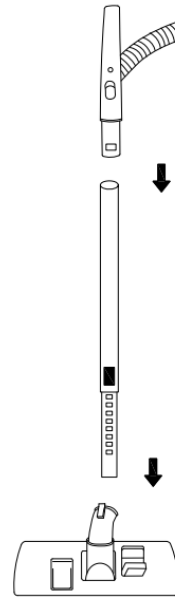
Fit the hook on the hose adapter in the recess in the hose opening on the machine. Press and turn about one half-turn to ensure a secure fit.



## 4. BELT

Insert the handle into the telescopic wand then insert the wand into the floor brush.

Adjust the length of the telescopic wand by pressing its button and altering the wand length. When vacuuming Stairs it is recommended that the wand is adjusted to its shortest length.



## 5. TOOLS

- **Combination Floor Tool**

One way for brush (hard floor) or smooth for carpet.

- **Crevice Tool**

Use for radiators, crevices, corners, baseboards and between cushions.

- **Dusting Brush**

The dusting brush is designed for cleaning the furniture.

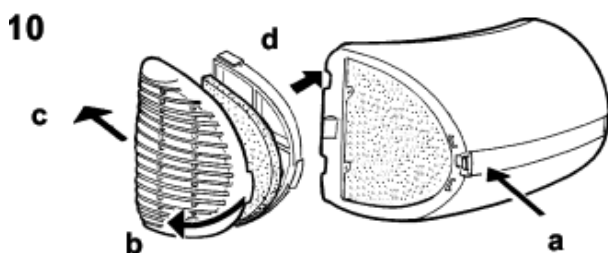
- **Upholstery Tool**

The upholstery tool is designed for cleaning the sofa, couch, seats or chairs.

## 6. EXHAUST FILTER

The exhaust cover is easily removed for filter changes:

- a) Grasp the cover in your hand.
- b) Release the locking mechanism by gently pressing down on one end of the locking bar.
- c) Ease the upper corner away from the vacuum housing.
- d) Slide the bottom edge of the cover away so the hinges on the bottom edge of the cover slip out of the housing.
- e) Remove filter holder and used filter.
- f) Install new filter and secure with the filter holder.
- g) Reinstall exhaust cover as in "Dust bag installation".





**Cleanstar Pty Ltd**

**ABN: 51 121 002 104 ACN: 121 002 104**

**59 Radford Road, Reservoir VICTORIA 3073**

**Phone: (03) 9460 5655 Fax: (03) 9460 5666**

**Email: [sales@cleanstar.com.au](mailto:sales@cleanstar.com.au) Web: [www.cleanstar.com.au](http://www.cleanstar.com.au)**

## **CONDITIONS OF WARRANTY**

**This document outlines the terms and conditions of warranty for your Cleanstar product. This is an important document that should be kept with your proof of purchase documents in a safe place for future reference should you require service for your product.**

Thank you for purchasing your new Cleanstar product. We are confident this product will give you trouble-free use and excellent service, provided the operator uses and maintains the product in accordance with the Instruction Manual. Please read the Instruction Manual carefully before using the product for correct operation and maintenance procedures, and store it in a safe place for future reference.

1. This is a parts and labour warranty against faulty or defective parts, materials or workmanship in manufacturing, when the product is used and operated in accordance with the Instruction Manual.
2. This product carries a 12 month (1 year) warranty period that commences from the original date of purchase by the first user/purchaser, and is not transferable.
3. This warranty only applies to products purchased and used in Australia.
4. At all times during the warranty period, Cleanstar shall, at its sole discretion, determine whether repair, replacement or refund will apply if the product has a valid warranty claim applicable to it.
5. The repair or replacement of the product under this warranty does not extend the original period of warranty.
6. Please note that this warranty will be voided in the following cases (which are not exhaustive) and the warranty does not apply to the cost of replacing any parts of the product resulting from:
  - Accidental damage;
  - Normal wear and tear;
  - Neglect, misuse or physical abuse by the operator, including failure to properly maintain or service;
  - Any alterations, modifications or tampering with the product without the prior written consent of Cleanstar;
  - Incomplete or improper installation;
  - Incorrect, improper or inappropriate operation;
  - Insect or vermin infestation;
  - Power surges, electrical storm damage or incorrect power supply/voltage;
  - Excessive use or use for which this product has not been designed;
  - Vacuuming up water, liquids, toner, powders, glass, hazardous, flammable or corrosive materials, plaster dust, concrete dust and other similar building or construction materials;
  - Failure to comply with the operating instructions contained in the Manual supplied with the product;

- If the product is rented;
- If the product is used outside of Australia;
- If the product was serviced or repaired by anyone other than Cleanstar, or one of Cleanstar's Authorised Service Agents (ASA).  
Cleanstar is unable to accept any responsibility under this warranty for any repair work not carried out by an ASA or from the use of non-genuine parts.

7. This warranty does not cover service calls, travelling time or consumable parts such as belts, dust bags, filters, hose or hose parts, rods and wands, floor tools and accessories, motor brushes and other like consumable items, unless defective in manufacture. In order to prolong the life of accessories and consumables, regular care and maintenance is recommended.
8. Please retain your original proof of purchase which will be required before you can make a claim under this warranty. If proof of purchase can not be provided at the time of a warranty claim or service, any work carried out on the cleaner is chargeable.
9. Any transportation and delivery costs involved in the repair of defective parts shall be borne by the claimant. In all instances, unless the product is transported by Cleanstar or a Cleanstar authorised representative, the product is transported at the owner's cost and risk while in transit to and from Cleanstar or its ASA.

Our goods come with guarantees that cannot be excluded under the Australian Consumer Law. You are entitled to a replacement or refund for a major failure and for compensation for any other reasonably foreseeable loss or damage. You are also entitled to have the goods repaired or replaced if the goods fail to be of acceptable quality and the failure does not amount to a major failure. The benefits conferred by this warranty are in addition to other rights and remedies under law in respect of the product to which this warranty relates.

**TO INQUIRE ABOUT MAKING A CLAIM UNDER THIS WARRANTY, PLEASE FOLLOW THESE STEPS:**

- a) carefully check the Instruction Manual and the terms of this warranty;
- b) have the name and model number of the appliance available;
- c) have the proof of purchase available (ie. invoice, receipt, etc) showing where the appliance was purchased from and date of purchase;
- d) call Cleanstar on **(03) 9460 5655** to speak to one of our customer service staff.