



CLEANSTAR

vacuum cleaners | bags | filters | accessories

CARPET EXTRACTION CATALOGUE

CLEANSTAR PTY LTD
235 BROADHURST AVENUE
RESERVOIR, VIC 3073

PH: (03) 9460 5655
FAX: (03) 9460 5666

EMAIL: sales@cleanstar.com.au
WEB: www.cleanstar.com.au

Sales Inquiries to:

Colin McDougal (0428 318 921) - Qld / NT / SA / Tas

Joe Salisbury (0400 301 548) - NSW / ACT

David Nel (0448 018 570) - Vic

Joe Pezzaniti (0400 369 690) - WA

CARPET EXTRACTION



CLASSIC WANDS & LOW PROFILE WANDS

1 JET, SINGLE BEND - CLASSIC WAND

- Overlap in welded head to vacuum tube for smooth vacuum flow and superior strength
- Stainless steel solution lines
- 'Soft Opening' control valve
- Brass angle valve
- Oval hand grip
- Full flow vacuum tube
- Precision 11003 nozzle (1ea)
- Splashguard
- 1.5" Diameter Tube
- Single Bend
- 12" Head Width
- 62" Height



Part No:

2 JET, 2 BEND - CLASSIC WAND

- Higher profile design 5.6" high
- 2-jet design uses standard V-jets (9503) or optional T-jets (11003)
- Side splashguards help to contain overspray
- Overlap in welded head to vacuum tube for smooth vacuum flow and superior strength
- Advanced control valve with 'soft opening' feature
- Stress-free oval shaped aluminum grip
- Stainless steel solution tube
- Brass angle valve
- Full flow vacuum extraction
- Precision stainless steel 11003 nozzles (2ea) for best performance
- 1.5" Diameter Tube
- Double Bend
- 12" Head Width
- 62" Height



Part No:



TEFLON GUARD/GLIDE
SUITS: 1 JET & 2 JET
CLASSIC WANDS
(CWCE-1JET & CWCE-2JET)

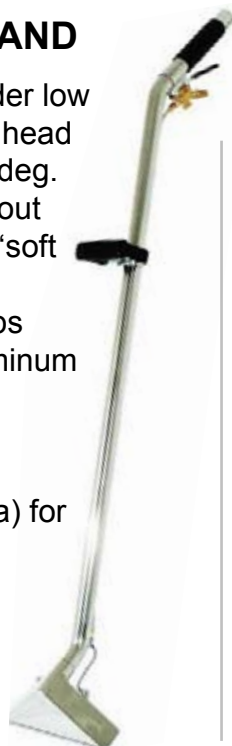
11.5" Long

Part No:

Attach to bottom of wand to glide over tile or stone. Also helps wand glide more smoothly over carpet.

2 JET - LOW PROFILE WAND

- Low Profile design to get under low furniture - only 4" high at the head
- 2-jet nozzle position is at 45 deg. angle to the carpet to lift dirt out
- Advanced control valve with 'soft opening' feature
- Light weight - less than 7.2 lbs
- Stress-free oval shaped aluminum grip
- Stainless steel solution tube
- Full flow vacuum extraction
- Precision 11003 nozzles (2ea) for best performance
- 1.5" Diameter Tube, S-Bend
- 12" Head Width
- 62" Height



Part No:

4 JET - LOW PROFILE WAND

- Low Profile for cleaning under low furniture - only 3.6" high
- Angled nozzles to 'lift dirt out' of carpet
- Advanced control valve with 'soft opening' feature
- 4-jet wand for even spray pattern
- All stainless steel
- Stress-free oval shaped aluminum grip
- Stainless steel solution tube
- Full flow vacuum extraction
- Precision 95015 nozzles (4ea) for best performance
- Splashguard
- 1.5" Diameter Tube, Double Bend
- 12" Head Width
- 62" Height

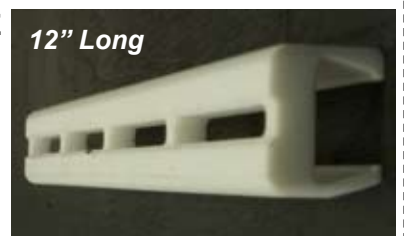


Part No:

TEFLON GUARD/GLIDE
SUITS: 4 JET LOW
PROFILE WAND
(LPCE-4JET)

Part No:

12" Long



CARPET EXTRACTION



WANDS (CONT'D)

TRUCKMOUNT WAND

4 JET, 14"

- 4-jet wand for even spray pattern
- Full 2" diameter Maximum Flow vacuum tube for ultimate extraction
- 2" hose has direct connection
- Very low profile 14" Head Width to reach under furniture - only 3.6" high
- Stainless Steel control valve with 'soft opening' feature
- Advanced control valve with 'soft opening' feature
- Stress-free oval shaped aluminum grip
- Stainless steel solution lines
- Full flow vacuum extraction
- Precision 95015 nozzles (4ea) for optimal coverage and performance
- Splashguard
- 63" Height



Part No:



TEFLON GUARD/GLIDE
SUITS: 14" WANDS
(WTM-14)

14" Long

Part No:

DETAIL TOOLS

CREVICE TOOL - EXTERNAL SPRAY

- Long reach flattened tube for cleaning in tight locations
- Forged brass control valve, rated at over 1200 PSI, with 'soft-opening' feature
- Vinyl covered handle for stress-free handling
- Polished stainless steel construction
- Long reach vacuum head
- Single spray jet for accurate surface penetration
- No splashguard
- Nozzle 9502
- 1.5" Diameter Tube
- 2" Head Width
- 1.5" Tube Diameter
- 18" length



Part No:

4" UNIVERSAL DETAIL TOOL

W/1.5" HOSE IN A HOSE

- 1.5" x 10' vacuum hose, with solution hose inside
- Forged brass control valve, rated at over 1200 PSI, with 'soft-opening' feature
- Vinyl covered handle for stress-free handling
- High pressure flex line with quick connect included
- Polished stainless steel construction
- Easy access single nozzle, precise pattern
- Slide valve to help you control the vacuum
- No splashguard
- Brass offset valve
- Nozzle 9502
- 1.5" Diameter Tube
- 4" Head Width
- 11" Length

Part No:



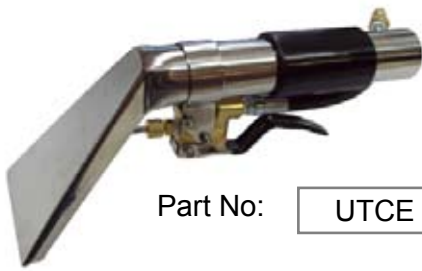
CARPET EXTRACTION



MADE IN USA

DETAIL TOOLS (CONT'D)

UPHOLSTERY TOOLS - STAINLESS STEEL



Part No: UTCE

4" UNIVERSAL DETAIL TOOL

- Forged brass control valve, rated at over 1200 PSI, with exclusive 'soft-opening' feature
- Vinyl covered handle for stress-free handling
- High pressure flex line with quick connect included
- No splashguard
- Polished stainless steel construction & brass connectors
- Easy access single nozzle, precise pattern
- Brass offset valve | Nozzle 9502
- 1.5" Diameter Tube | 4" Head Width | 11" Length



Part No: UTCE-1

With Splash Guard

4" UNIVERSAL DETAIL TOOL WITH SPLASH GUARD

- Forged brass control valve, rated at over 1200 PSI, with exclusive 'soft-opening' feature
- Vinyl covered handle for stress-free handling
- High pressure flex line with quick connect included
- Polished stainless steel construction & brass connectors
- Easy access single nozzle, precise pattern
- Brass offset valve | Nozzle 9502
- 1.5" Diameter Tube | 4" Head Width | 11" Length



Part No: UTCE-2

With Splash Guard & Vacuum Release

4" UNIVERSAL DETAIL TOOL WITH SPLASH GUARD & VACUUM RELEASE

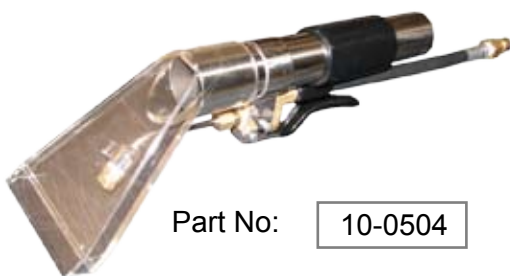
- Forged brass control valve, rated at over 1200 PSI, with exclusive 'soft-opening' feature
- Vinyl covered handle for stress-free handling
- High pressure flex line with quick connect included
- Polished stainless steel construction and brass connectors
- 1.5" vacuum tube
- Easy access single nozzle, precise pattern
- Slide valve to help you control the flow
- Brass offset valve | Nozzle 9502
- 1.5" Diameter Tube | 4" Head Width | 11" Length



SHORT FLEX HOSE TO SUIT UTCE DETAIL TOOLS

Part No: FLEX-UTCE

4" CLEAR HEAD DETAIL TOOL



Part No: 10-0504

- Polycarbonate Clear Head
- Smooth head design for gentle fabrics
- See through head so you know when your job is complete
- Forged brass control valve, rated at over 1200 PSI, with exclusive 'soft-opening' feature
- Vinyl covered handle for stress-free handling
- High pressure flex line with quick connect included
- Polished stainless steel construction
- Easy access single nozzle, precise pattern
- Brass offset valve | Nozzle 9502
- 1.5" Diameter Tube | 4" Head Width | 12" Length

CARPET EXTRACTION



HARD SURFACE TOOLS

SPINNER TOOL COMPLETE WITH SS VALVE

- Stainless steel vacuum swivel for trouble free service
- Double seal stainless vacuum swivel with 3 bearings on each side
- Low profile - less than 3" tall
- T-style handle for easy control
- All stainless steel construction
- 1 3/4" flow path for maximum flow
- High pressure all stainless steel valve (rated to 140°C, or 285°F)
- Inlet for 2" hose, will also fit 1.5" hose cuff
- Stainless steel angle valve
- Rotating vacuum bypass near handle for ease of use
- Replaceable floor ring allows use of various floor rings and brushes
- Balanced spin jets for high pressure cleaning
- Vacuum slots at the edge to remove water and debris
- High pressure double bearing and ceramic seal assembly
- Splashguard | Nozzle 0502 (2ea) | 2.0" Diameter Tube
- 14" Head Width | 2.75" Head Height | 52" Height
- Some light cleaning can occur at 500 to 600 PSI
- For good cleaning set the pressure at 800 PSI, but best cleaning occurs at 900 to 1100 PSI
- Floor damage can occur above 1200 PSI



Part No:

SPIN

BEARING FOR FLOOR SPINNER TOOL

Part No:

20-0098



BRUSH FOR SPINNER TOOL

Part No:

SPIN-BRUSH



REPLACEMENT BAR FOR BOTTOM OF SPINNER TOOL

Part No:

SPIN-BAR



1.5" NUT FOR SPINNER TOOL

Part No:

M27



HAND SPINNER TOOL

- Brush attachment to ensure a clean job
- High pressure double bearing and ceramic seal assembly
- Balanced spin jets for high pressure cleaning
- Nozzles angled toward edge of brush for edge cleaning
- Comfortable High pressure handle grip
- 1.5" flow path for maximum flow
- All stainless steel construction
- Stainless steel angle valve
- Vacuum slots at the edge to remove water and debris
- Inlet for 1.5" hose
- Splashguard
- Nozzle 0502 (2ea)
- 1.5" Diameter Tube
- 6" Head Width
- 2.75" Head Height
- 10" Height

Part No:

HSPIN

BEARING FOR HAND SPINNER TOOL

Part No:

20-0155



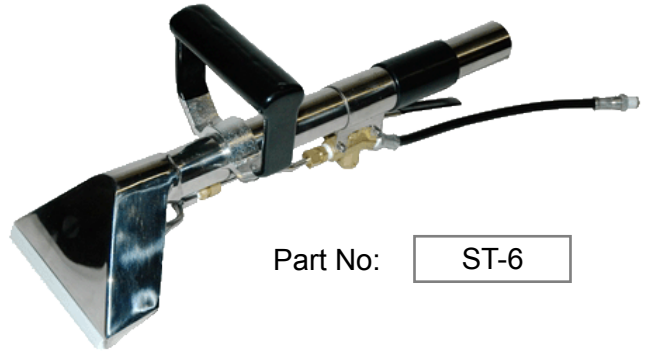
CARPET EXTRACTION



STAIR TOOLS

6" STAIR TOOL, 18" LONG

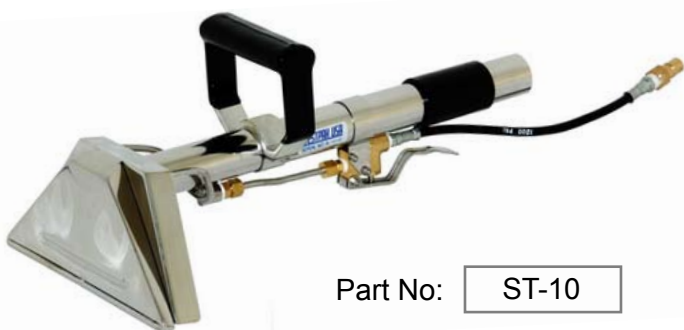
- 2 jet design for wide and even spray patterns
- 6" wide head for ease of use
- 18" length with a 15 deg kick-up angle
- Stainless steel solution tube
- Forged brass control valve, rated at over 1200 PSI, with 'soft-opening' feature
- Vinyl covered, oval shaped aluminum adjustable grip
- Polished stainless steel construction
- Splashguard | Brass offset valve
- Nozzle 9503 (2ea) | 1.5" Diameter Tube
- 6" Head Width | 18" Length



Part No: ST-6

10" STAIR DETAIL TOOL, 18" LONG

- 2 jet design for wide and even spray patterns
- Single 15 deg bend construction for ease of use
- 18" length to allow cleaning on stairs and tight location such as closets
- Utilises detail tool valve with flexible hose for tight locations
- Ideal for mattress cleaning
- Stainless steel solution tube
- Forged brass control valve, rated at over 1200 PSI, with 'soft-opening' feature
- Vinyl covered, oval shaped aluminum adjustable grip
- Polished stainless steel construction
- Splashguard
- Brass offset valve
- Nozzle 9503 (2ea)
- 1.5" Diameter Tube
- 10" Head Width
- 18" Length



Part No: ST-10

STAIR TOOL SHORT, 29" LONG

- 2 jet design for wide and even spray patterns
- Double S-bend construction for ease of use
- 29" length to allow upright cleaning on stairs
- Forged brass control valve, rated at over 1200 PSI, with 'soft-opening' feature
- Vinyl covered, oval shaped aluminum adjustable grip
- Polished stainless steel construction
- Stainless steel solution tube
- Splashguard
- Nozzle 9503 (2ea)
- 1.5" Diameter Tube
- 10" Head Width
- 29" Length

Part No: ST-1029



CARPET EXTRACTION



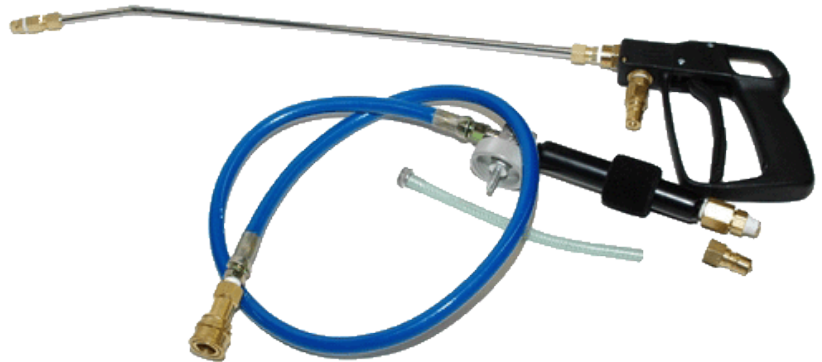
SPRAYERS

8:1 SPRAYER WITH HOSE AND HANDLE

- Fixed Ratio (8:1) sprayer with hose and spray gun
- High pressure spray gun handle
- High pressure flexible hose
- Quick connect for hose to handle connection
- Designed for 'two-hand' operation (hold spray gun in one hand and the bottle in the other)
- Brass quick disconnects
- 100 mesh inline filter
- Cushion grip handle with velcro bottle strap
- Forged brass metering injection block
- Replaceable metering jet and components



Part No: 10-0507



8:1 SPRAYER STD W/VALVE AND LANCE

- Fixed ratio (8:1) sprayer with 22" lance and control valve
- Forged brass, 1200 PSI control valve with 'soft opening' feature
- Designed for 'one-hand' operation
- Brass quick disconnects
- 100 mesh inline filter
- Cushion grip handle with velcro bottle strap
- Forged brass metering injection block
- Removable tip for ratio adjustment
- Replaceable metering jet and components



Part No: 10-0518

ST-810 SPRAYER GUN

Part No: GUN



REPLACEMENT VALVE TRIGGER KIT FOR ST-810 SPRAYER GUN

Part No: RV-ANG

See over page...

CARPET EXTRACTION



VALVES



BRASS ANGLE VALVE

Suits: **Wands**

- Forged brass with soft opening control valve
- 1200 PSI pressure rated
- Universal design, fits PMF, Pro-chem, Kingston, CDI, and CMP

Part No:



BRASS OFFSET VALVE

Suits: **Upholstery Tools, Detail Tools & Stair Tools**

- 200 OS detail valves
- 1200 PSI pressure rated
- Universal design, fits PMF, Pro-chem, Kingston, CDI, and CMP

Part No:



RV-ANG

REPLACEMENT VALVE TRIGGER KIT

SUITS: **SUITS ANGLED VALVE & ST-810 SPRAYER GUN**

Part No:



UTCE-OS

REPLACEMENT VALVE TRIGGER KIT

SUITS: **OFFSET VALVE**

Part No:

BRACKET FOR ANGLE VALVE

1.5" (38mm) with screws

Suits: **Wands**

Part No:



VALVE ADAPTOR KIT

Part No:



BRACKET FOR OFFSET VALVE

Suits: **Upholstery Tools**

Part No:



PMF V1245 UPHOLSTERY VALVE REPAIR KIT

Part No:



CARPET EXTRACTION



MADE IN USA

VALVES (CONT'D)



1/4" x 1/4" COMPRESSION FITTING

Suits: **Wands**

Used on Wands to attach the Stainless Steel Tube to the Valve and the bottom Nozzle

Part No:



1/8" x 3/16" COMPRESSION FITTING

Suits: **Detail Tools**

Used on Detail Tools to attach the Stainless Steel Tube to the Valve

Part No:



BALL VALVE, MINI HEX CHROME 1/4" MXF

Chrome Plated M X F 1/4"

Part No:



BALL VALVE, MINI HEX CHROME PLATED - 1/4" FXF

Chrome Plated F X F 1/4"

Part No:



CHECK VALVE 1" LONG

Check valve, 1" long 1/8" M x F (nozzle ext.)

Part No:



CHECK VALVE 1/2" LONG

Check valve, 1/2" long 1/8" M x F (nozzle ext.)

Part No:

CARPET EXTRACTION



CHOOSE THE RIGHT NOZZLE

CHOOSE THE RIGHT NOZZLE

How to read nozzle numbers:

Nozzles used on wands have a set of 4, 5, or 6 numbers which give information about flow and spraying angle. The first two or three numbers indicate the spray angle. Normally 80, or 95, or 110 are used with carpet cleaning, but others, such as 05 or 25, are available also.

The second group of numbers (the last 2-3 numbers), indicate the flow that will pass through each nozzle. Numbers such as 015, 02, and 03 are common numbers.

How to read nozzle sizes, angle of spray:

The first 2 or 3 numbers in the Nozzle ID indicate the angle in degrees at 40 PSI.

Size	Angle @ 40 PSI	Angle @ 200 PSI
110	110°	122°
95	95°	111°
80	80°	90°
65	65°	79°

How to read nozzle sizes, flow:

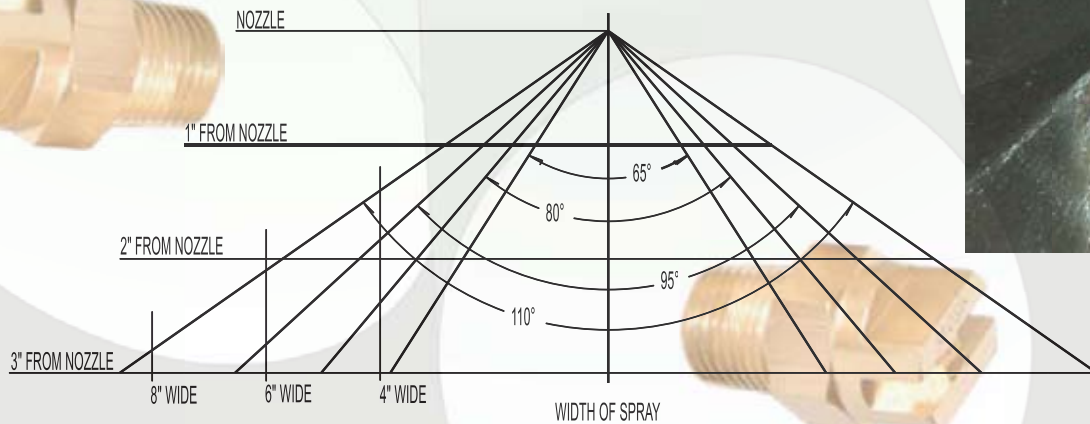
The last 2 or 3 numbers in the Nozzle ID indicate the nozzle size in Gallons Per Minute at 40 PSI. Note that at higher pressure the flow increases.

Size	Flow @ 40 PSI	Flow @ 200 PSI	Flow @ 600 PSI
01	0.1 gpm	0.2 gpm	0.4 gpm
015	0.15 gpm	0.3 gpm	0.6 gpm
02	0.2 gpm	0.4 gpm	0.8 gpm
03	0.3 gpm	0.6 gpm	1.2 gpm
05	0.5 gpm	1.0 gpm	2.0 gpm

Examples:

110015	=	110° 0.15gpm	11003	=	110° 0.3gpm
9502	=	95° 0.2gpm	8003	=	80° 0.3gpm
6506	=	65° 0.6gpm			

DISTANCE FROM NOZZLE AND NOZZLE ANGLE



The chart above is useful to verify that you are using the right angle nozzle on your wand. Find the angle of nozzle that you are using, measure the distance to the vacuum opening. Check to see if you have the width of coverage that you need. Replace nozzle as needed to get the proper coverage and proper flow. Most 4 jet wands should have 95015 or 110015 nozzles (typical).

Remember that the correct size nozzle will provide good coverage, keeping heat in the solution for better cleaning and faster solution removal for dryer carpets.

CARPET EXTRACTION



MADE IN USA

NOZZLES

**BRASS NOZZLE,
1/4" 9501**

Part No: 10-0611



**BRASS NOZZLE,
1/4" VV 9505**

Part No: 10-0624



**BRASS NOZZLE,
1/8" V-JET 9501**

Part No: 10-0816

**BRASS NOZZLE,
1/8" VV 9505**

Part No: 10-0625



**BRASS NOZZLE,
1/4" V-JET 9502**

Part No: 10-0815



**BRASS NOZZLE,
1/4" V-JET 95015**

Part No: 10-0917



**BRASS NOZZLE,
1/8" V-JET 9502**

Part No: 10-0923



**BRASS NOZZLE,
1/8" V-JET 95015**

Part No: 10-0619



**STAINLESS STEEL
NOZZLE, 1/8" V-JET 9502**

Part No: 10-0925

**STAINLESS STEEL NOZZLE,
1/8" V-JET 95015**

Part No: 10-0820



**BRASS NOZZLE,
1/8" 9503**

Part No: 10-0290



BRASS NOZZLE, T-JET 6506

Part No: 10-0610



**BRASS NOZZLE,
1/4" V-JET 9503**

Part No: 10-0629



BRASS NOZZLE, T-JET 11002

Part No: 10-0607



**BRASS NOZZLE,
1/4" V-JET 110015**

Part No: 10-0919



**BRASS NOZZLE,
1/8" V-JET 11002**

Part No: 10-0631



**STAINLESS STEEL NOZZLE,
1/8" V-JET 11002**

Part No: 10-0926

CARPET EXTRACTION



ACCESSORIES

SPRAYER BLOCK WITH HOSE & HOSE FILTER

Part No:



'O' RING TO SUIT 10-0712 SPRAYER BLOCK

Part No:



REPAIR KIT FOR SPRAYER BLOCK

Part No:



T-JET HOLDER, W/FILTER AND CHECK VALVE 1/4" NPT
(comes with bearing & spring inside)

Part No:



FILTER ONLY, 100 MESH

Part No:



T-JET HOLDER, W/FILTER 1/4" NPT

Part No:

FILTER ONLY W/CHK VALVE, 100 MESH

Part No:

CRIMP FITTING CRS FOR 1/4" HOSE X 1/4" M
1/4" MNPT x 1/4" hose crimp

Part No:



FILTER ASSEMBLY
Filter holder, 1/4" NPT, M X F

Part No:



1/8" NPT 45 DEG. STREET ELL

Part No:



1/4" NPT 45 DEG. STREET ELL

Part No:



SHURFLO PUMP - 100PSI 230v

Part No:



NPT 1/8" x 1/4" BRASS BUSHING

Part No:



CARPET EXTRACTION



ACCESSORIES (CONT'D)



VINYL STRAIN RELIEF (SLEEVE) FOR 1/4" HOSE

Part No:



1.5" ALUMINUM WAND HANDLE

Part No:



1.5" BLACK HAND GRIP

Part No:



2" BLACK HAND GRIP

Part No:



HANDLE FOR TRUCKMOUNT WAND (WTM-14)

Part No:

SPRAY BOTTLE
4.73 litres

Part No:



1.5" VALTERRA BLACK GATE / DUMP VALVES
(can be dismantled)

1 x Straight side (front)
1 x Screw side (back)

Part No:



2 x Straight sides
(front & back)

Part No:



1.5" GATE VALVE INTERNAL SEAL

Part No:



1.5" GATE VALVE SEAL RING KIT

Part No:



45 DEGREE DUMP SPOUT

Part No:



1.5" EXTERNAL GASKET BLACK
(suits Valterra Black Gate / Dump Valves)

Part No:

CARPET EXTRACTION

MOTORS

(Suitable for Carpet Extraction Units)

APPROXIMATE
MEASUREMENTS ONLY



ITALIAN AMETEK 1300W 2 STAGE TANGENTIAL

Part No:
69501020

Height: 175mm
Base height: 71mm
Diameter: 145mm



USA LAMB 1400W 3 STAGE TANGENTIAL BYPASS (183mm)

Part No:
116136

Height: 200mm
Base height: 86mm
Diameter: 183mm



SHANGHAI AMETEK 240V 2 STAGE TANGENTIAL

Part No:
119625

Height: 170mm
Base height: 79mm
Diameter: 145mm



1200W 3 STAGE TANGENTIAL

Part No:
116859-13

Height: 199mm
Base height: 92mm
Diameter: 145mm



1200 WATT, 120 VOLT - 2 STAGE FLO THRU

Part No:

Height: 150mm
Base height: 66mm
Diameter: 144mm

CARPET EXTRACTION



HOSES & CONNECTORS

SOLUTION HOSE WITH BRASS CONNECTORS 3000 PSI *Braided inside*

Part No: 7.5 METRES

Part No: 15 METRES



3/8" X 1/4" CONNECTOR FOR SOLUTION HOSE

Part No:



BRASS CONNECTORS



Part No: MALE



Part No: FEMALE

STAINLESS STEEL CONNECTORS (2000 PSI)



Part No: MALE



Part No: FEMALE



GVAC HOSE

Part No: 38mm - 15 metres GREY

Part No: 38mm - 15 metres ORANGE

Part No: 51mm - 15 metres GREY

Part No: 51mm - 15 metres ORANGE

CARPET EXTRACTION



MADE IN USA

CUFFS, JOINERS & ADAPTORS



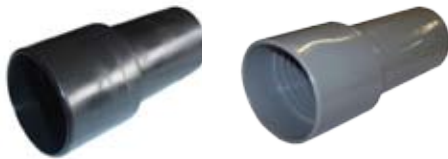
HOSE CUFF WITH HOLE - 38MM

Part No:



SWIVEL CUFF - 38MM

Part No:



HOSE CUFF - 38MM

Black or Grey - depending on stock availability

Part No:



SWIVEL CUFF - 51MM

Part No:



HOSE CUFF - 51MM

Part No:



HOSE JOINER - 38MM

Part No:



2" X 1.5" ADAPTOR

2" (51mm) x 1.5" (38mm) Barb Coupling, PVC

Part No:



HOSE JOINER - 51MM

Part No:



1.5" X 1.5" ADAPTOR

1.5" x 1.5" (38mm) Barb Coupling, PVC

Part No:



REDUCER CUFF
2" (51mm) Threaded x
1.5" (38mm) Slip Cuff

Part No:



2" X 2" ADAPTOR

2" x 2" (51mm) Barb Coupling, PVC

Part No:

EXPANDER CUFF
1.5" (38mm) Threaded x
2" (51mm) Slip Cuff

Part No:



CARPET EXTRACTION

CARPET EXTRACTION MACHINE

CLEANSTAR 3 IN 1 - 1400 Watt CARPET EXTRACTION MACHINE

20 Litre Capacity

1. Vacuum Dry Dirt
2. Vacuum Water
3. Wash Hard Floors
4. Wash Carpets
5. Clean Windows

- Carpet Tool
- Upholstery Cleaning Tool
- Window Cleaning Kit
- 5 Castor Wheels
- Combination Floor Tool
- Crevice Tool
- Dusting Brush
- Upholstery Tool
- Anti-Foam Filter
- Carpet Shampoo (500ml)



Part No:

BSE3IN1



MOST PARTS WILL ALSO SUIT THE FOLLOWING MODELS:

*** PULLMAN SEM 1200, 1400, 1600**

*** WERTHEIM SEM 1200, 1400, 1600**